

A Policy Against Bullying and Harassment

Rationale

"We now know that in Australian schools at least one child in six is bullied by peers on a weekly basis. Among these, some are not greatly troubled but others do become seriously depressed have few (if any) friends, stay home from school because of bullying, and may become quite ill because of it. A person's self-esteem may remain low for a lifetime if bullied continually at school.

Sometimes teachers concede that it may be a problem in some schools, but not theirs. In such cases a carefully conducted survey is needed to test student opinion. Such enquiries invariably show that bullying is prevalent and that some children are being badly harmed (Rigby and Slee, 1993)

What is Bullying?

- Bullying is any kind of behaviour used repeatedly with the intention of causing embarrassment, pain, discomfort or unhappiness to another person
- Bullying can take many forms including physical, verbal, gesture, extortion or exclusion
- It can be unintentional or planned
- It may involve an individual or group.

The following behaviours are bullying -

Physical violence, teasing, belittling, malicious gossiping, spreading rumours, excluding others from a group, forcing others to act against their will, making suggestive comments or other forms of sexual abuse, making discriminatory or degrading comments about another's appearance, race, culture, family, religious or social background, writing offensive notes, or graffiti about others. Inceas-

ingly these activities may be conducted on the internet.

Girraween High School is committed to a safe and caring environment where everyone has a right to positive, respectful relationships. As part of the overall Student Welfare Policy, Girraween High School seeks to provide an environment that is so from all forms of intimidation. We do not tolerate bullying in any form.

The Common Features of Bullying

- It is deliberate hurtful behaviour
- It is repeated often over a period of time
- It is difficult for those being bullied to defend themselves

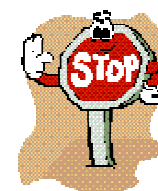
The main types of bullying.

- **Physical** -hitting, kicking, taking belongings, damaging or destroying the property of others
- **Verbal** ~ name-calling, insulting remarks, malicious gossip, intimidation or threats
- **Indirect** - spreading rumours, excluding from groups

Responsibility of the school community

All members of the school community have a responsibility to take a stand against bullies and harassment.

**IF YOU SEE A BULLY DO NOT STAND BY:
TAKE ACTION AND
TELL THE BULLY
TO**

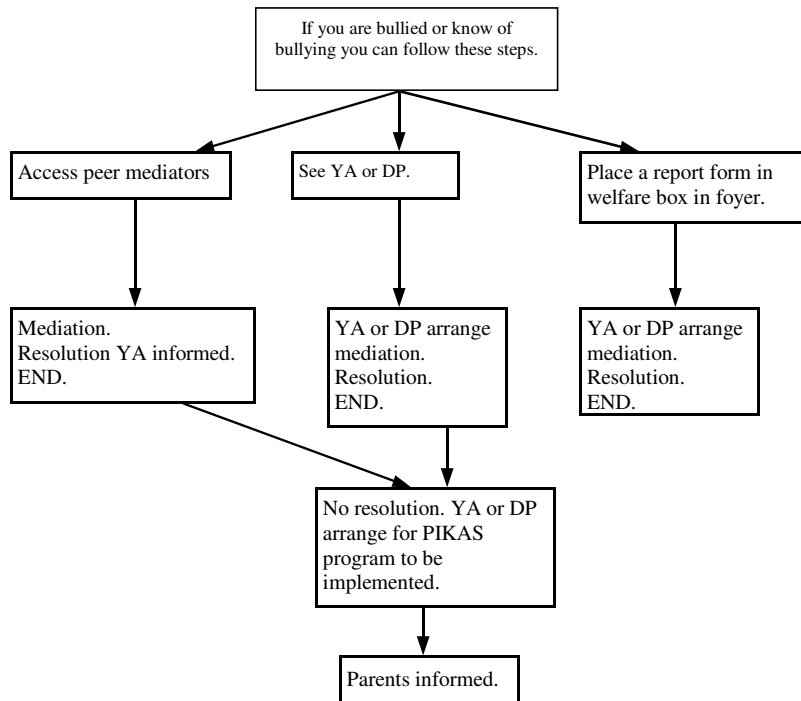


Students are expected to speak out against bullies. All reports are to be treated in confidence and supported by the school community

Staff are expected to intervene when bullying occurs and refer situations to student mediators, a Student *Adviser*, or a Deputy Principal. All bullying reports are to be followed up and action taken.

Parents and Guardians are expected to contact the school if their child's efforts to deal with bullying are unsuccessful

What to do if you are bullied!



NOTE: Bullies who continually victimise others may be suspended.

GIRRAWEEEN HIGH SCHOOL

A POLICY AGAINST BULLYING AND HARASSMENT.

JANUARY 2003